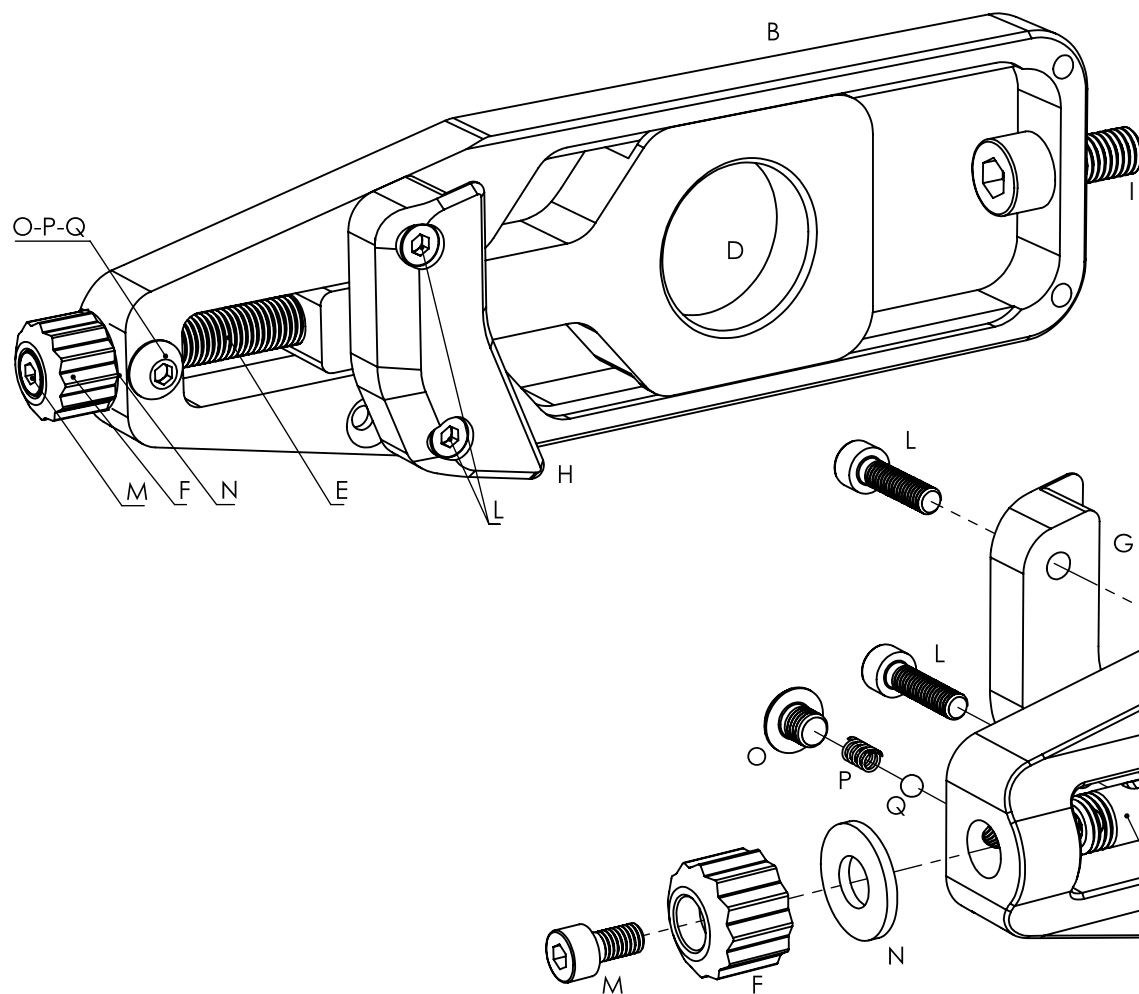


Attenzione: in fase di montaggio eliminare la rondella originale

Attention: during the assembly phase remove the original washer

Attenzione: è consigliato far montare il seguente prodotto da un'officina specializzata

Attention: It is recommended to mount this product by a specialized workshop



Reference	Description	N°
A	Right chain adjuster frame	1
B	Left chain adjuster frame	1
C	Right adjuster	1
D	Left adjuster	1
E	Regulator screw	2
F	Regulator handle	2
G	Right chain adjuster block	1
H	Left chain adjuster block	1
I	M8 x 20 screw	2
L	M4 x 16 screw	4
M	M4 x 8 screw	2
N	Nylon washer	2
O	M5 screw (spring plunger)	2
P	Spring (spring plunger)	2
Q	Ball (spring plunger)	2

